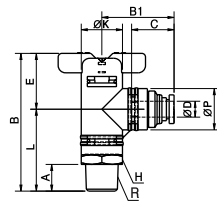


# BL

Elbow



MODEL [ØD-T]

Tube (Metric) - Thread(R)

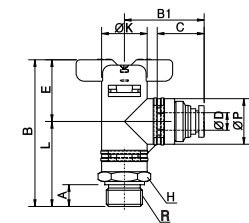
MODEL	ØD	R
BL 20-06-01	6	R1/8
BL 20-06-02	6	R1/4
BL 20-06-03	6	R3/8
BL 20-08-01	8	R1/8
BL 20-08-02	8	R1/4
BL 20-08-03	8	R3/8
BL 60-10-02	10	R1/4
BL 60-10-03	10	R3/8
BL 60-10-04	10	R1/2
BL 60-12-02	12	R1/4
BL 60-12-03	12	R3/8
BL 60-12-04	12	R1/2

Tube (Inch) - Thread (NPT)

MODEL	ØD	R
BL 20 1/4-N1/8	1/4	NPT1/8
BL 20 1/4-N1/4	1/4	NPT1/4
BL 20 1/4-N3/8	1/4	NPT3/8
BL 20 5/16-N1/8	5/16	NPT1/8
BL 20 5/16-N1/4	5/16	NPT1/4
BL 20 5/16-N3/8	5/16	NPT3/8
BL 60 3/8-N1/4	3/8	NPT1/4
BL 60 3/8-N3/8	3/8	NPT3/8
BL 60 3/8-N1/2	3/8	NPT1/2
BL 60 1/2-N1/4	1/2	NPT1/4
BL 60 1/2-N3/8	1/2	NPT3/8
BL 60 1/2-N1/2	1/2	NPT1/2

# BL-G

Elbow



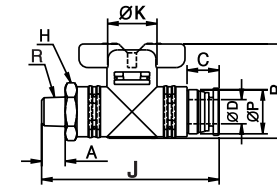
MODEL [ØD-T]

Tube (Metric) - Thread(G)

MODEL	ØD	R
BL 20-06G01	6	G1/8
BL 20-06G02	6	G1/4
BL 20-06G03	6	G3/8
BL 20-08G01	8	G1/8
BL 20-08G02	8	G1/4
BL 20-08G03	8	G3/8
BL 60-10G02	10	G1/4
BL 60-10G03	10	G3/8
BL 60-10G04	10	G1/2
BL 60-12G02	12	G1/4
BL 60-12G03	12	G3/8
BL 60-12G04	12	G1/2

# BC

Straight



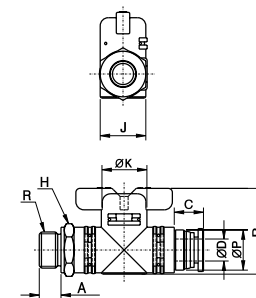
MODEL [ØD-T]

Tube (Metric) - Thread(R)

MODEL	ØD	R
BC 20-06-01	6	R1/8
BC 20-06-02	6	R1/4
BC 20-06-03	6	R3/8
BC 20-08-01	8	R1/8
BC 20-08-02	8	R1/4
BC 20-08-03	8	R3/8
BC 60-10-02	10	R1/4
BC 60-10-03	10	R3/8
BC 60-10-04	10	R1/2
BC 60-12-02	12	R1/4
BC 60-12-03	12	R3/8
BC 60-12-04	12	R1/2

# BC-G

Straight



MODEL [ØD-T]

Tube (Metric) - Thread(G)

MODEL	ØD	R
BC 20-06G01	6	G1/8
BC 20-06G02	6	G1/4
BC 20-06G03	6	G3/8
BC 20-08G01	8	G1/8
BC 20-08G02	8	G1/4
BC 20-08G03	8	G3/8
BC 60-10G02	10	G1/4
BC 60-10G03	10	G3/8
BC 60-10G04	10	G1/2
BC 60-12G02	12	G1/4
BC 60-12G03	12	G3/8
BC 60-12G04	12	G1/2