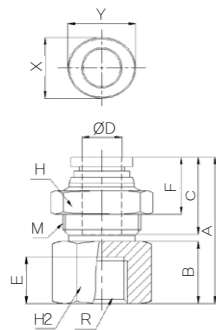


F-PMF(G)

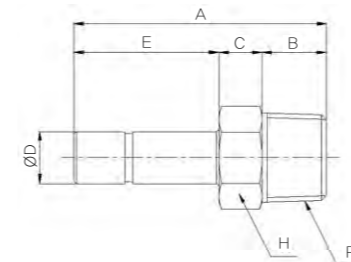
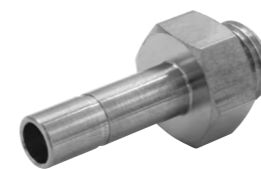
(Bulkhead Female Straight)



CODE	MODEL	ØD	M	A	B	C	E	F	H1	H2	R	X	Y	W.G(g)	Q'ty/ inbox
96200441	F-PMF 04G01	4.0	M12X1	25.5	11.0	14.9	9.0	10.6	14.0	14.0	PF1/8	8.6	10.5	23.9	50
96200641	F-PMF 06G01	6.0	M15X1	26.8	9.0	15.8	9.0	11.3	17.0	17.0	PF1/8	11.0	12.5	35.1	40
96200642	F-PMF 06G02	6.0	M15X1	31.8	14.0	15.8	12.0	11.3	17.0	17.0	PF1/4	11.0	12.5	39.0	40
96200841	F-PMF 08G01	8.0	M17X1	30.4	9.0	17.8	9.0	13.8	19.0	19.0	PF1/8	13.0	14.5	48.3	40
96200842	F-PMF 08G02	8.0	M17X1	35.4	14.0	17.8	12.0	13.8	19.0	19.0	PF1/4	13.0	14.5	54.5	40
96201042	F-PMF 10G02	10.0	M20X1	32.7	13.0	19.8	12.0	14.4	22.0	22.0	PF1/4	16.0	17.5	72.3	40
96201043	F-PMF 10G03	10.0	M20X1	34.7	15.0	19.8	13.0	14.4	22.0	22.0	PF3/8	16.0	17.5	70.2	20
96201243	F-PMF 12G03	12.0	M24X1	37.4	14.0	22.4	13.0	16.4	24.0	24.0	PF3/8	19.5	21.5	98.8	20
96201244	F-PMF 12G04	12.0	M24X1	41.4	18.0	22.4	16.0	16.4	24.0	24.0	PF1/2	19.5	21.5	97.4	20

F-PCJ(G)

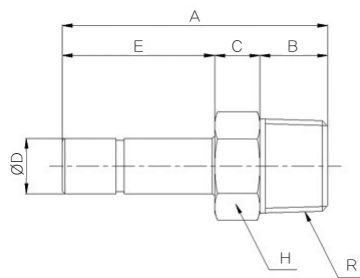
(Plug-in Male)



CODE	MODEL	ØD	A	B	C	E	H	R	W.G(g)	Q'ty/ inbox
96540431	F-PCJ 04G01	4.0	31.3	5.3	8.0	18.0	13.0	PF1/8	12.6	100
96540631	F-PCJ 06G01	6.0	36.3	5.3	8.0	23.0	13.0	PF1/8	13.1	100
96540632	F-PCJ 06G02	6.0	37.0	6.0	8.0	23.0	17.0	PF1/4	22.4	50
96540831	F-PCJ 08G01	8.0	38.3	5.3	8.0	25.0	13.0	PF1/8	12.9	50
96540832	F-PCJ 08G02	8.0	39.0	6.0	8.0	25.0	17.0	PF1/4	22.2	50
96541032	F-PCJ 10G02	10.0	41.0	6.0	8.0	27.0	17.0	PF1/4	28.5	25
96541033	F-PCJ 10G03	10.0	42.0	7.0	8.0	27.0	21.0	PF3/8	34.2	25
96541233	F-PCJ 12G03	12.0	44.0	7.0	8.0	29.0	21.0	PF3/8	32.8	25
96541234	F-PCJ 12G04	12.0	45.5	8.5	8.0	29.0	24.0	PF1/2	49.3	25

F-PCJ(R)

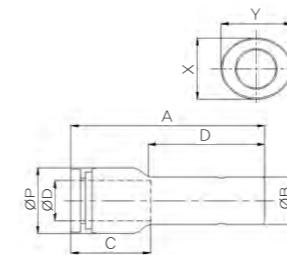
(Plug-in Male)



CODE	MODEL	ØD	A	B	C	E	H	R	W.G(g)	Q'ty/ inbox
96540411	F-PCJ 0401	4.0	34.0	8.0	8.0	18.0	10.0	PT1/8	11.0	100
96540611	F-PCJ 0601	6.0	39.0	8.0	8.0	23.0	10.0	PT1/8	11.4	100
96540612	F-PCJ 0602	6.0	42.0	11.0	8.0	23.0	14.0	PT1/4	23.3	50
96540811	F-PCJ 0801	8.0	41.0	8.0	8.0	25.0	10.0	PT1/8	10.8	50
96540812	F-PCJ 0802	8.0	44.0	11.0	8.0	25.0	14.0	PT1/4	22.4	50
96541012	F-PCJ 1002	10.0	46.0	11.0	8.0	27.0	14.0	PT1/4	20.7	25
96541013	F-PCJ 1003	10.0	47.0	12.0	8.0	27.0	17.0	PT3/8	34.2	25
96541213	F-PCJ 1203	12.0	49.0	12.0	8.0	29.0	17.0	PT3/8	31.7	25
96541214	F-PCJ 1204	12.0	52.0	15.0	8.0	29.0	21.0	PT1/2	57.5	25

F-PGJ

(Plug-In Reducer)



CODE	MODEL	ØD	ØP	A	ØB	C	E	X	Y	W.G(g)	Q'ty/ inbox
96184300	F-PGJ 0604	4.0	10.0	37.5	6.0	14.9	22.0	8.6	10.5	9.1	50
96184500	F-PGJ 0806	6.0	13.0	40.8	8.0	15.8	23.3	11.0	12.5	14.9	40
96184700	F-PGJ 1008	8.0	14.0	44.2	10.0	17.8	24.7	13.0	14.5	17.6	40
94185000	F-PGJ 1210	10.0	16.7	48.2	12.0	19.8	26.7	16.0	17.5	25.1	25