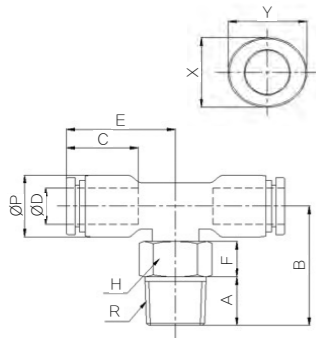


F-PT(R)

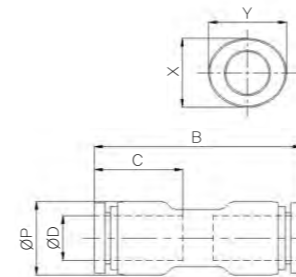
(Male Branch Tee)



CODE	MODEL	ØD	ØP	A	B	C	E	F	R	X	Y	W.G(g)	Q'ty/ inbox	(mm)
96030411	F-PT 0401	4.0	10.0	8.0	22.0	14.9	19.0	8.0	PT1/8	8.6	10.5	25.1	50	
96030611	F-PT 0601	6.0	13.0	8.0	23.5	15.8	21.3	8.0	PT1/8	11.0	12.5	35.5	40	
96030612	F-PT 0602	6.0	13.0	11.0	26.5	15.8	21.3	8.0	PT1/4	11.0	12.5	43.7	40	
96030811	F-PT 0801	8.0	14.0	8.0	24.0	17.8	24.7	8.0	PT1/8	13.0	14.5	40.7	40	
96030812	F-PT 0802	8.0	14.0	11.0	27.0	17.8	24.7	8.0	PT1/4	13.0	14.5	47.6	25	
96031012	F-PT 1002	10.0	16.7	11.0	28.0	19.8	26.7	8.0	PT1/4	16.0	17.5	64.9	20	
96031013	F-PT 1003	10.0	16.7	12.0	29.0	19.8	26.7	8.0	PT3/8	16.0	17.5	72.0	20	
96031213	F-PT 1203	12.0	19.7	12.0	30.5	22.4	29.3	8.0	PT3/8	19.5	21.5	95.7	15	
96031214	F-PT 1204	12.0	19.7	15.0	33.5	22.4	29.3	8.0	PT1/2	19.5	21.5	114.9	15	

F-PUC

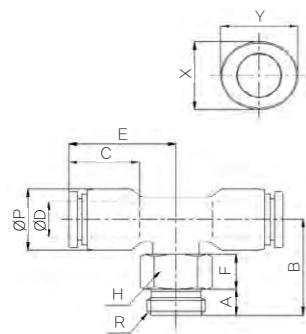
(Union Straight)



CODE	MODEL	ØD	ØP	B	C	X	Y	W.G(g)	Q'ty/ inbox	(mm)
96040400	F-PUC 04	4.0	10.0	35.0	14.9	8.6	10.5	14.5	50	
96040600	F-PUC 06	6.0	13.0	37.5	15.8	11.0	12.5	24.1	40	
96040800	F-PUC 08	8.0	14.0	43.4	17.8	13.0	14.5	27.8	40	
96041000	F-PUC 10	10.0	16.7	47.4	19.8	16.0	17.5	41.2	25	
96041200	F-PUC 12	12.0	19.7	51.6	22.4	19.5	21.5	61.1	20	

F-PT(G)

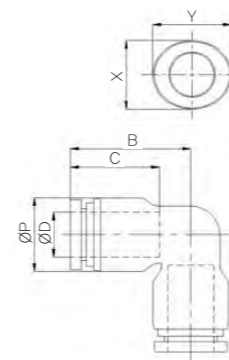
(Male Branch Tee)



CODE	MODEL	ØD	ØP	A	B	C	E	F	R	X	Y	W.G(g)	Q'ty/ inbox	(mm)
96030431	F-PT 04G01	4.0	10.0	8.0	22.0	14.9	19.0	8.0	PF1/8	8.6	10.5	26.3	50	
96030631	F-PT 06G01	6.0	13.0	8.0	23.5	15.8	21.3	8.0	PF1/8	11.0	12.5	36.8	40	
96030632	F-PT 06G02	6.0	13.0	11.0	26.5	15.8	21.3	8.0	PF1/4	11.0	12.5	45.0	40	
96030831	F-PT 08G01	8.0	14.0	8.0	24.0	17.8	24.7	8.0	PF1/8	13.0	14.5	42.0	40	
96030832	F-PT 08G02	8.0	14.0	11.0	27.0	17.8	24.7	8.0	PF1/4	13.0	14.5	48.9	25	
96031032	F-PT 10G02	10.0	16.7	11.0	28.0	19.8	26.7	8.0	PF1/4	16.0	17.5	66.2	20	
96031033	F-PT 10G03	10.0	16.7	12.0	29.0	19.8	26.7	8.0	PF3/8	16.0	17.5	71.7	20	
96031233	F-PT 12G03	12.0	19.7	12.0	30.5	22.4	29.3	8.0	PF3/8	19.5	21.5	95.4	15	
96031234	F-PT 12G04	12.0	19.7	15.0	33.5	22.4	29.3	8.0	PF1/2	19.5	21.5	109.2	15	

F-PUL

(Union Elbow)



CODE	MODEL	ØD	ØP	B	C	X	Y	W.G(g)	Q'ty/ inbox	(mm)
96050400	F-PUL 04	4.0	10.0	19.0	14.9	8.6	10.5	15.1	50	
96050600	F-PUL 06	6.0	13.0	21.3	15.8	11.0	12.5	25.7	40	
96050800	F-PUL 08	8.0	14.0	24.7	17.8	13.0	14.5	30.2	40	
96051000	F-PUL 10	10.0	16.7	26.7	19.8	16.0	17.5	44.7	25	
96051200	F-PUL 12	12.0	19.7	29.3	22.4	19.5	21.5	66.1	20	