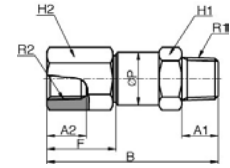


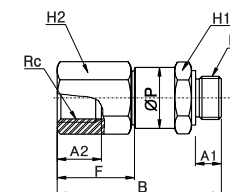
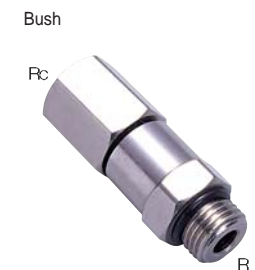
## NHRF



MODEL [ØD-T]

Tube (Metric) - Thread(R)		
MODEL	R1	R2
NHRF 01-01	R1/8	Rc1/8
NHRF 01-02	R1/8	Rc1/4
NHRF 02-01	R1/4	Rc1/8
NHRF 02-02	R1/4	Rc1/4
NHRF 03-03	R3/8	Rc3/8
NHRF 03-04	R3/8	Rc1/2
NHRF 04-03	R1/2	Rc3/8
NHRF 04-04	R1/2	Rc1/2

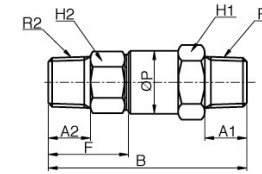
## NHRF-G



MODEL [ØD-T]

Tube (Metric) - Thread(G)		
MODEL	R	Rc
NHRF G01-G01	G1/8	G1/8
NHRF G01-G02	G1/8	G1/4
NHRF G02-G01	G1/4	G1/8
NHRF G02-G02	G1/4	G1/4
NHRF G03-G03	G3/8	G3/8
NHRF G03-G04	G3/8	G1/2
NHRF G04-G03	G1/2	G3/8
NHRF G04-G04	G1/2	G1/2

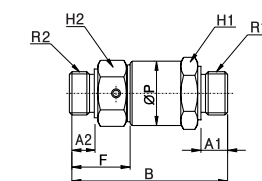
## NHRS



MODEL [ØD-T]

Tube (Metric) - Thread(R)		
MODEL	R1	R2
NHRS 01-01	R1/8	R1/8
NHRS 01-02	R1/8	R1/4
NHRS 02-01	R1/4	R1/8
NHRS 02-02	R1/4	R1/4
NHRS 03-03	R3/8	R3/8
NHRS 03-04	R3/8	R1/2
NHRS 04-03	R1/2	R3/8
NHRS 04-04	R1/2	R1/2

## NHRS-G



MODEL [ØD-T]

Tube (Metric) - Thread(G)		
MODEL	R	Rc
NHRS G01-G01	G1/8	G1/8
NHRS G01-G02	G1/8	G1/4
NHRS G02-G01	G1/4	G1/8
NHRS G02-G02	G1/4	G1/4
NHRS G03-G03	G3/8	G3/8
NHRS G03-G04	G3/8	G1/2
NHRS G04-G03	G1/2	G3/8
NHRS G04-G04	G1/2	G1/2