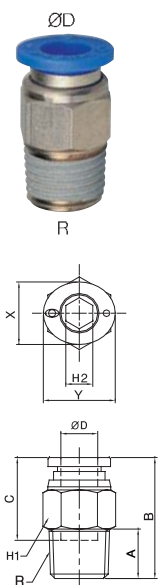


PC

Male Straight



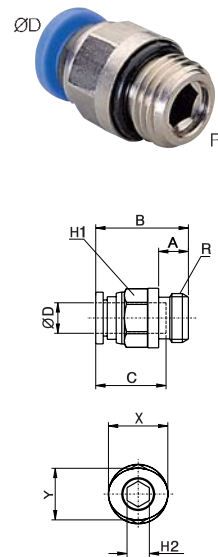
MODEL [ØD-T]

Tube (Metric) - Thread(R)		
MODEL	ØD	R
PC 04-M5	4	M5
PC 04-M6	4	M6
PC 04-01	4	R1/8
PC 04-02	4	R1/4
PC 04-03	4	R3/8
PC 06-M5	6	M5
PC 06-M6	6	M6
PC 06-01	6	R1/8
PC 06-02	6	R1/4
PC 06-03	6	R3/8
PC 06-04	6	R1/2
PC 08-01	8	R1/8
PC 08-02	8	R1/4
PC 08-03	8	R3/8
PC 08-04	8	R1/2
PC 10-01	10	R1/8
PC 10-02	10	R1/4
PC 10-03	10	R3/8
PC 10-04	10	R1/2
PC 12-01	12	R1/8
PC 12-02	12	R1/4
PC 12-03	12	R3/8
PC 12-04	12	R1/2
PC 16-03	16	R3/8
PC 16-04	16	R1/2

*Hexagonal wrench may be used for a proper tightening.

PC-G

Male Straight

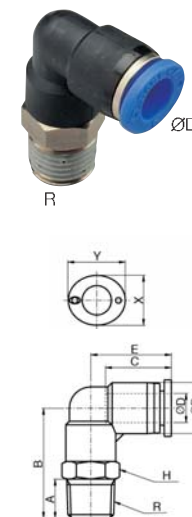


MODEL [ØD-T]

Tube (Metric) - Thread(G)		
MODEL	ØD	R
PC 04-G01	4	G1/8
PC 04-G02	4	G1/4
PC 04-G03	4	G3/8
PC 06-G01	6	G1/8
PC 06-G02	6	G1/4
PC 06-G03	6	G3/8
PC 06-G04	6	G1/2
PC 08-G01	8	G1/8
PC 08-G02	8	G1/4
PC 08-G03	8	G3/8
PC 08-G04	8	G1/2
PC 10-G01	10	G1/8
PC 10-G02	10	G1/4
PC 10-G03	10	G3/8
PC 10-G04	10	G1/2
PC 12-G01	12	G1/8
PC 12-G02	12	G1/4
PC 12-G03	12	G3/8
PC 12-G04	12	G1/2
PC 16-G03	16	G3/8
PC 16-G04	16	G1/2

PL

Male Elbow



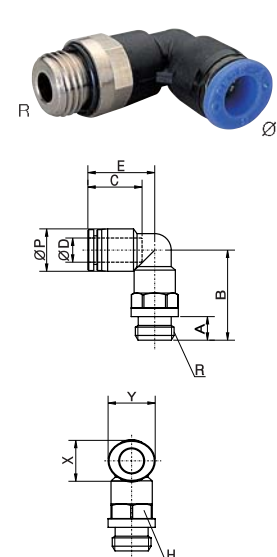
MODEL [ØD-T]

Tube (Metric) - Thread(R)		
MODEL	ØD	R
PL 04-M5	4	M5
PL 04-M6	4	M6
PL 04-01	4	R1/8
PL 04-02	4	R1/4
PL 04-03	4	R3/8
PL 06-M5	6	M5
PL 06-M6	6	M6
PL 06-01	6	R1/8
PL 06-02	6	R1/4
PL 06-03	6	R3/8
PL 06-04	6	R1/2
PL 08-01	8	R1/8
PL 08-02	8	R1/4
PL 08-03	8	R3/8
PL 08-04	8	R1/2
PL 10-01	10	R1/8
PL 10-02	10	R1/4
PL 10-03	10	R3/8
PL 10-04	10	R1/2
PL 12-01	12	R1/8
PL 12-02	12	R1/4
PL 12-03	12	R3/8
PL 12-04	12	R1/2
PL 16-03	16	R3/8
PL 16-04	16	R1/2

*Rotating body construction after a proper installation.

PL-G

Male Elbow

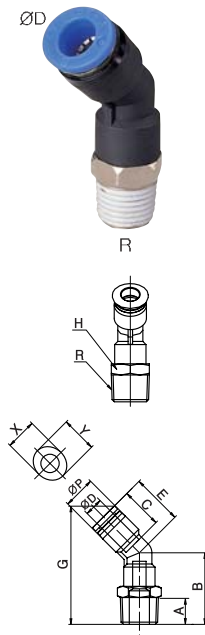


MODEL [ØD-T]

Tube (Metric) - Thread(G)		
MODEL	ØD	R
PL 04-G01	4	G1/8
PL 04-G02	4	G1/4
PL 04-G03	4	G3/8
PL 06-G01	6	G1/8
PL 06-G02	6	G1/4
PL 06-G03	6	G3/8
PL 06-G04	6	G1/2
PL 08-G01	8	G1/8
PL 08-G02	8	G1/4
PL 08-G03	8	G3/8
PL 08-G04	8	G1/2
PL 10-G01	10	G1/8
PL 10-G02	10	G1/4
PL 10-G03	10	G3/8
PL 10-G04	10	G1/2
PL 12-G01	12	G1/8
PL 12-G02	12	G1/4
PL 12-G03	12	G3/8
PL 12-G04	12	G1/2
PL 16-G03	16	G3/8
PL 16-G04	16	G1/2

PL45

Male 45° Elbow

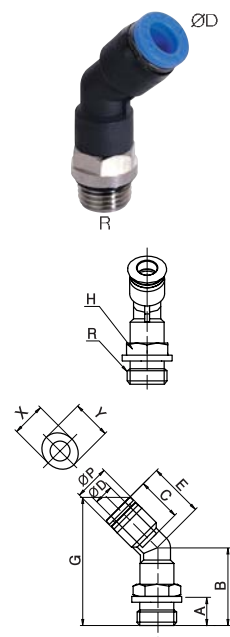


MODEL [ØD-T]

Tube (Metric) - Thread(R)		
MODEL	ØD	R
PL45 04-M5	4	M5
PL45 04-M6	4	M6
PL45 04-01	4	R1/8
PL45 04-02	4	R1/4
PL45 04-03	4	R3/8
PL45 06-M5	6	M5
PL45 06-M6	6	M6
PL45 06-01	6	R1/8
PL45 06-02	6	R1/4
PL45 06-03	6	R3/8
PL45 06-04	6	R1/2
PL45 08-01	8	R1/8
PL45 08-02	8	R1/4
PL45 08-03	8	R3/8
PL45 08-04	8	R1/2
PL45 10-01	10	R1/8
PL45 10-02	10	R1/4
PL45 10-03	10	R3/8
PL45 10-04	10	R1/2
PL45 12-01	12	R1/8
PL45 12-02	12	R1/4
PL45 12-03	12	R3/8
PL45 12-04	12	R1/2

PL45-G

Male 45° Elbow

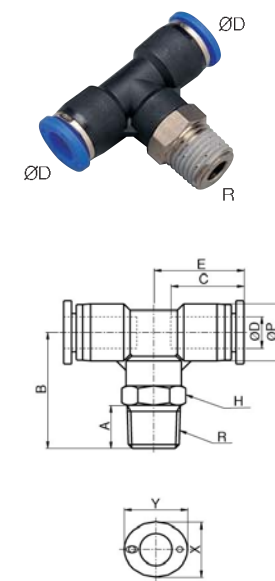


MODEL [ØD-T]

Tube (Metric) - Thread(G)		
MODEL	ØD	R
PL45 04-G01	4	G1/8
PL45 04-G02	4	G1/4
PL45 04-G03	4	G3/8
PL45 06-G01	6	G1/8
PL45 06-G02	6	G1/4
PL45 06-G03	6	G3/8
PL45 06-G04	6	G1/2
PL45 08-G01	8	G1/8
PL45 08-G02	8	G1/4
PL45 08-G03	8	G3/8
PL45 08-G04	8	G1/2
PL45 10-G01	10	G1/8
PL45 10-G02	10	G1/4
PL45 10-G03	10	G3/8
PL45 10-G04	10	G1/2
PL45 12-G01	12	G1/8
PL45 12-G02	12	G1/4
PL45 12-G03	12	G3/8
PL45 12-G04	12	G1/2

PT

Male Branch Tee



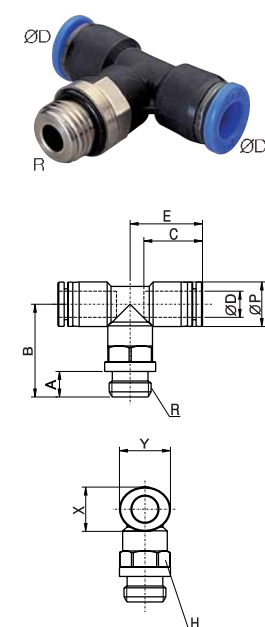
MODEL [ØD-T]

Tube (Metric) - Thread(R)		
MODEL	ØD	R
PT 04-M5	4	M5
PT 04-M6	4	M6
PT 04-01	4	R1/8
PT 04-02	4	R1/4
PT 04-03	4	R3/8
PT 06-M5	6	M5
PT 06-M6	6	M6
PT 06-01	6	R1/8
PT 06-02	6	R1/4
PT 06-03	6	R3/8
PT 06-04	6	R1/2
PT 08-01	8	R1/8
PT 08-02	8	R1/4
PT 08-03	8	R3/8
PT 08-04	8	R1/2
PT 10-01	10	R1/8
PT 10-02	10	R1/4
PT 10-03	10	R3/8
PT 10-04	10	R1/2
PT 12-01	12	R1/8
PT 12-02	12	R1/4
PT 12-03	12	R3/8
PT 12-04	12	R1/2
PT 16-03	16	R3/8
PT 16-04	16	R1/2

*Rotating body construction after a proper installation.

PT-G

Male Branch Tee



MODEL [ØD-T]

Tube (Metric) - Thread(G)		
MODEL	ØD	R
PT 04-G01	4	G1/8
PT 04-G02	4	G1/4
PT 04-G03	4	G3/8
PT 06-G01	6	G1/8
PT 06-G02	6	G1/4
PT 06-G03	6	G3/8
PT 06-G04	6	G1/2
PT 08-G01	8	G1/8
PT 08-G02	8	G1/4
PT 08-G03	8	G3/8
PT 08-G04	8	G1/2
PT 10-G01	10	G1/8
PT 10-G02	10	G1/4
PT 10-G03	10	G3/8
PT 10-G04	10	G1/2
PT 12-G01	12	G1/8
PT 12-G02	12	G1/4
PT 12-G03	12	G3/8
PT 12-G04	12	G1/2
PT 16-G03	16	G3/8
PT 16-G04	16	G1/2