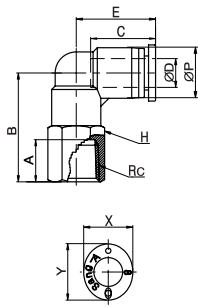


PLF

Female Elbow



MODEL [ØD-T]

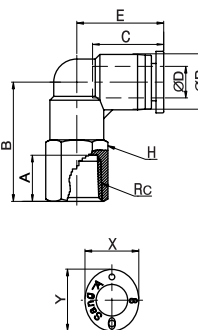
Tube (Metric) - Thread(R)

MODEL	ØD	Rc
PLF 04-M5	4	M5
PLF 04-M6	4	M6
PLF 04-01	4	Rc1/8
PLF 04-02	4	Rc1/4
PLF 06-M5	6	M5
PLF 06-M6	6	M6
PLF 06-01	6	Rc1/8
PLF 06-02	6	Rc1/4
PLF 06-03	6	Rc3/8
PLF 08-01	8	Rc1/8
PLF 08-02	8	Rc1/4
PLF 08-03	8	Rc3/8
PLF 10-02	10	Rc1/4
PLF 10-03	10	Rc3/8
PLF 10-04	10	Rc1/2

*Rotating body construction after a proper installation.

PLF-G

Female Elbow



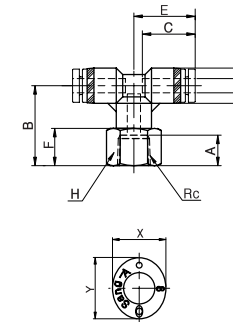
MODEL [ØD-T]

Tube (Metric) - Thread(G)

MODEL	ØD	Rc
PLF 04-G01	4	G1/8
PLF 04-G02	4	G1/4
PLF 06-G01	6	G1/8
PLF 06-G02	6	G1/4
PLF 06-G03	6	G3/8
PLF 08-G01	8	G1/8
PLF 08-G02	8	G1/4
PLF 08-G03	8	G3/8
PLF 10-G02	10	G1/4
PLF 10-G03	10	G3/8
PLF 10-G04	10	G1/2

PTF

Female Branch Tee



MODEL [ØD-T]

Tube (Metric) - Thread(R)

MODEL	ØD	Rc
PTF 04-M5	4	M5
PTF 04-M6	4	M6
PTF 04-01	4	Rc1/8
PTF 04-02	4	Rc1/4
PTF 06-M5	6	M5
PTF 06-M6	6	M6
PTF 06-01	6	Rc1/8
PTF 06-02	6	Rc1/4
PTF 06-03	6	Rc3/8
PTF 08-01	8	Rc1/8
PTF 08-02	8	Rc1/4
PTF 08-03	8	Rc3/8
PTF 10-02	10	Rc1/4
PTF 10-03	10	Rc3/8
PTF 10-04	10	Rc1/2