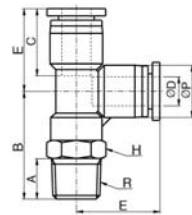


PST

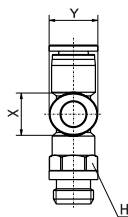
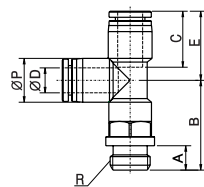
 Male Run Tee $\varnothing D$

MODEL [ØD-T]
Tube (Metric) - Thread(R)

MODEL	ØD	R
PST 04-M5	4	M5
PST 04-M6	4	M6
PST 04-01	4	R1/8
PST 04-02	4	R1/4
PST 04-03	4	R3/8
PST 06-M5	6	M5
PST 06-M6	6	M6
PST 06-01	6	R1/8
PST 06-02	6	R1/4
PST 06-03	6	R3/8
PST 06-04	6	R1/2
PST 08-01	8	R1/8
PST 08-02	8	R1/4
PST 08-03	8	R3/8
PST 08-04	8	R1/2
PST 10-01	10	R1/8
PST 10-02	10	R1/4
PST 10-03	10	R3/8
PST 10-04	10	R1/2
PST 12-01	12	R1/8
PST 12-02	12	R1/4
PST 12-03	12	R3/8
PST 12-04	12	R1/2

*Rotating body construction after a proper installation.

PST-G

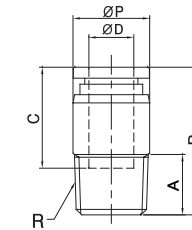
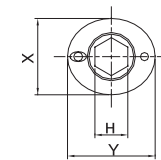
Male run Tee


MODEL [ØD-T]
Tube (Metric) - Thread(G)

MODEL	ØD	R
PST 04-G01	4	G1/8
PST 04-G02	4	G1/4
PST 04-G03	4	G3/8
PST 06-G01	6	G1/8
PST 06-G02	6	G1/4
PST 06-G03	6	G3/8
PST 06-G04	6	G1/2
PST 08-G01	8	G1/8
PST 08-G02	8	G1/4
PST 08-G03	8	G3/8
PST 08-G04	8	G1/2
PST 10-G01	10	G1/8
PST 10-G02	10	G1/4
PST 10-G03	10	G3/8
PST 10-G04	10	G1/2
PST 12-G01	12	G1/8
PST 12-G02	12	G1/4
PST 12-G03	12	G3/8
PST 12-G04	12	G1/2

POC

Round Male Straight

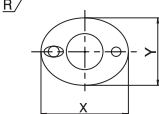
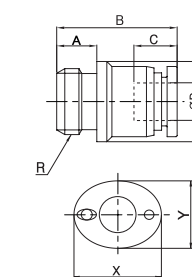

MODEL [ØD-T]
Tube (Metric) - Thread(R)

MODEL	ØD	R
POC 04-M5	4	M5
POC 04-M6	4	M6
POC 04-01	4	R1/8
POC 04-02	4	R1/4
POC 04-03	4	R3/8
POC 06-M5	6	M5
POC 06-M6	6	M6
POC 06-01	6	R1/8
POC 06-02	6	R1/4
POC 06-03	6	R3/8
POC 08-01	8	R1/8
POC 08-02	8	R1/4
POC 08-03	8	R3/8
POC 08-04	8	R1/2
POC 10-01	10	R1/8
POC 10-02	10	R1/4
POC 10-03	10	R3/8
POC 10-04	10	R1/2
POC 12-01	12	R1/8
POC 12-02	12	R1/4
POC 12-03	12	R3/8
POC 12-04	12	R1/2

*Hexagonal wrench may be used for a proper tightening.

POC-G

Male run Tee


MODEL [ØD-T]
Tube (Metric) - Thread(G)

MODEL	ØD	R
POC 04-G01	4	G1/8
POC 04-G02	4	G1/4
POC 04-G03	4	G3/8
POC 06-G01	6	G1/8
POC 06-G02	6	G1/4
POC 06-G03	6	G3/8
POC 08-G01	8	G1/8
POC 08-G02	8	G1/4
POC 08-G03	8	G3/8
POC 08-G04	8	G1/2
POC 10-G01	10	G1/8
POC 10-G02	10	G1/4
POC 10-G03	10	G3/8
POC 10-G04	10	G1/2
POC 12-G01	12	G1/8
POC 12-G02	12	G1/4
POC 12-G03	12	G3/8
POC 12-G04	12	G1/2