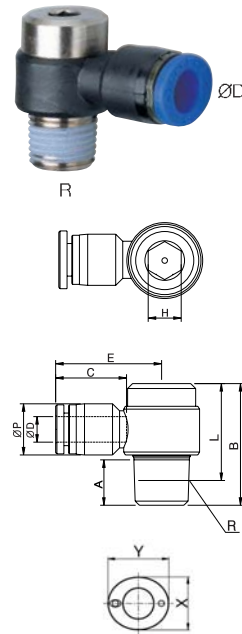


## POL

Hex. Holed Banjo



MODEL [ØD-T]

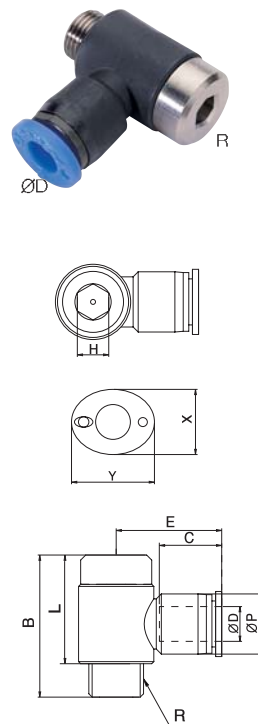
Tube (Metric) - Thread(R)

MODEL	ØD	R
POL 04-M5	4	M5
POL 04-M6	4	M6
POL 04-01	4	R1/8
POL 06-M5	6	M5
POL 06-M6	6	M6
POL 06-01	6	R1/8
POL 06-02	6	R1/4
POL 06-03	6	R3/8
POL 08-01	8	R1/8
POL 08-02	8	R1/4
POL 08-03	8	R3/8
POL 08-04	8	R1/2
POL 10-02	10	R1/4
POL 10-03	10	R3/8
POL 10-04	10	R1/2
POL 12-02	12	R1/4
POL 12-03	12	R3/8
POL 12-04	12	R1/2

\*Rotating body construction after a proper installation.

## POL-G

Extended Male Elbow



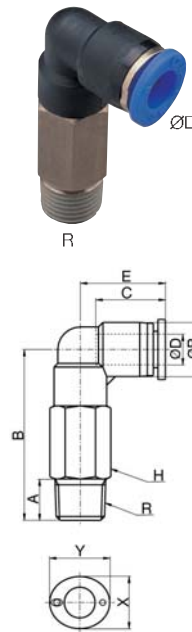
MODEL [ØD-T]

Tube (Metric) - Thread(G)

MODEL	ØD	R
POL 04-G01	4	PF1/8
POL 06-G01	6	PF1/8
POL 06-G02	6	PF1/4
POL 08-G01	8	PF1/8
POL 08-G02	8	PF1/4
POL 08-G03	8	PF3/8
POL 10-G02	8	PF1/4
POL 10-G03	10	PF3/8
POL 12-G03	12	PF3/8
POL 12-G04	12	PF1/2

## PLL

Extended Male Elbow



MODEL [ØD-T]

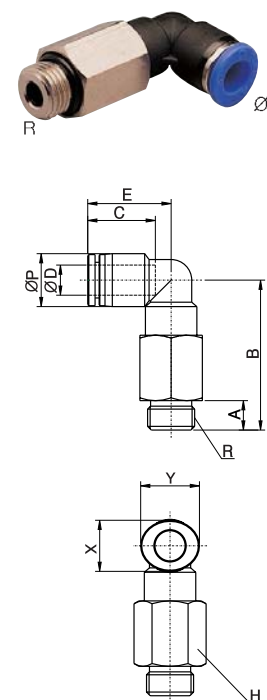
Tube (Metric) - Thread(R)

MODEL	ØD	Rc
PLL 04-M5	4	M5
PLL 04-M6	4	M6
PLL 04-01	4	R1/8
PLL 04-02	4	R1/4
PLL 04-03	4	R3/8
PLL 06-M5	6	M5
PLL 06-M6	6	M6
PLL 06-01	6	R1/8
PLL 06-02	6	R1/4
PLL 06-03	6	R3/8
PLL 08-01	8	R1/8
PLL 08-02	8	R1/4
PLL 08-03	8	R3/8
PLL 08-04	8	R1/2
PLL 10-01	10	R1/8
PLL 10-02	10	R1/4
PLL 10-03	10	R3/8
PLL 10-04	10	R1/2
PLL 12-01	12	R1/8
PLL 12-02	12	R1/4
PLL 12-03	12	R3/8
PLL 12-04	12	R1/2

\*Hexagonal wrench may be used for a proper tightening.

## PLL-G

Extended Male Elbow



MODEL [ØD-T]

Tube (Metric) - Thread(G)

MODEL	ØD	R
PLL 04-G01	4	G1/8
PLL 04-G02	4	G1/4
PLL 04-G03	4	G3/8
PLL 06-G01	6	G1/8
PLL 06-G02	6	G1/4
PLL 06-G03	6	G3/8
PLL 06-G04	6	G1/2
PLL 08-G01	8	G1/8
PLL 08-G02	8	G1/4
PLL 08-G03	8	G3/8
PLL 08-G04	8	G1/2
PLL 10-G01	10	G1/8
PLL 10-G02	10	G1/4
PLL 10-G03	10	G3/8
PLL 10-G04	10	G1/2
PLL 12-G01	12	G1/8
PLL 12-G02	12	G1/4
PLL 12-G03	12	G3/8
PLL 12-G04	12	G1/2
PLL 16-G04	16	G1/2