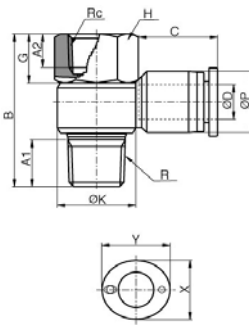


PHF

Female Banjo



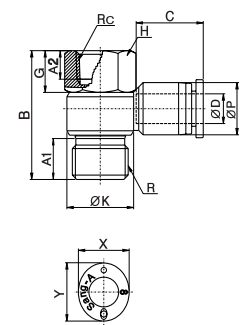
MODEL [ØD-T]

Tube (Metric) - Thread(R)		
MODEL	ØD	Rc
PHF 04-M5	4	M5
PHF 04-M6	4	M6
PHF 04-01	4	R1/8
PHF 04-02	4	R1/4
PHF 06-M5	6	M5
PHF 06-M6	6	M6
PHF 06-01	6	R1/8
PHF 06-02	6	R1/4
PHF 06-03	6	R3/8
PHF 08-01	8	R1/8
PHF 08-02	8	R1/4
PHF 08-03	8	R3/8
PHF 08-04	8	R1/2
PHF 10-02	10	R1/4
PHF 10-03	10	R3/8
PHF 10-04	10	R1/2
PHF 12-02	12	R1/4
PHF 12-03	12	R3/8
PHF 12-04	12	R1/2

*Rotating body construction after a proper installation.

PHF-G

Female Banjo

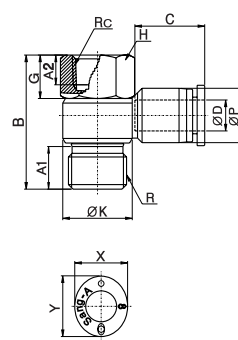


MODEL [ØD-T]

Tube (Metric) - Thread(G)		
MODEL	ØD	Rc
PHF 04-G01	4	G1/8
PHF 06-G01	4	G1/8
PHF 06-G02	4	G1/4
PHF 08-G01	6	G1/8
PHF 08-G02	6	G1/4
PHF 08-G03	6	G3/8
PHF 10-G02	8	G1/4
PHF 10-G03	8	G3/8
PHF 12-G03	12	G3/8
PHF 12-G04	12	G1/2

PHF-GG

Female Banjo

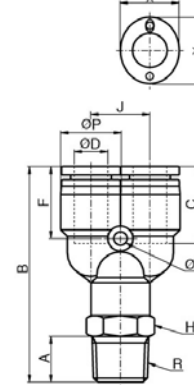


MODEL [ØD-T]

Tube (Metric) - Thread(G)		
MODEL	ØD	Rc
PHF 04G01-G01	4	G1/8
PHF 06G01-G01	4	G1/8
PHF 06G02-G02	4	G1/4
PHF 08G01-G01	6	G1/8
PHF 08G02-G02	6	G1/4
PHF 08G03-G03	6	G3/8
PHF 10G02-G02	8	G1/4
PHF 10G03-G03	8	G3/8
PHF 12G03-G03	12	G3/8
PHF 12G04-G04	12	G1/2

PWT

Male Y



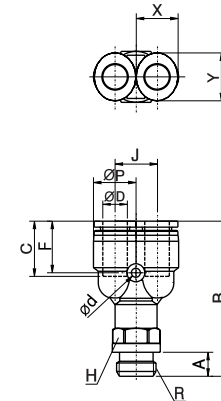
MODEL [ØD-T]

Tube (Metric) - Thread(R)		
MODEL	ØD	R
PWT 04-M5	4	M5
PWT 04-M6	4	M6
PWT 04-01	4	R1/8
PWT 04-02	4	R1/4
PWT 04-03	4	R3/8
PWT 06-M5	6	M5
PWT 06-M6	6	M6
PWT 06-01	6	R1/8
PWT 06-02	6	R1/4
PWT 06-03	6	R3/8
PWT 08-01	8	R1/8
PWT 08-02	8	R1/4
PWT 08-03	8	R3/8
PWT 08-04	8	R1/2
PWT 10-01	10	R1/8
PWT 10-02	10	R1/4
PWT 10-03	10	R3/8
PWT 10-04	10	R1/2
PWT 12-01	12	R1/8
PWT 12-02	12	R1/4
PWT 12-03	12	R3/8
PWT 12-04	12	R1/2

*Rotating body construction after a proper installation.

PWT-G

Male Y



MODEL [ØD-T]

Tube (Metric) - Thread(G)		
MODEL	ØD	R
PWT 04-G01	4	G1/8
PWT 04-G02	4	G1/4
PWT 04-G03	4	G3/8
PWT 06-G01	6	G1/8
PWT 06-G02	6	G1/4
PWT 06-G03	6	G3/8
PWT 06-G04	6	G1/2
PWT 08-G01	8	G1/8
PWT 08-G02	8	G1/4
PWT 08-G03	8	G3/8
PWT 08-G04	8	G1/2
PWT 10-G01	10	G1/8
PWT 10-G02	10	G1/4
PWT 10-G03	10	G3/8
PWT 10-G04	10	G1/2
PWT 12-G01	12	G1/8
PWT 12-G02	12	G1/4
PWT 12-G03	12	G3/8
PWT 12-G04	12	G1/2