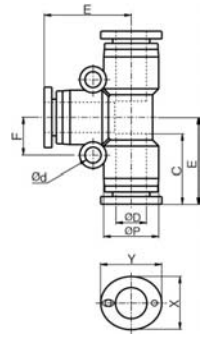


PUT

Union Tee



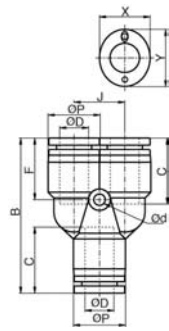
MODEL [ØD-T]

Tube (Metric) - Thread(R)

MODEL	ØD
PUT 04	4
PUT 06	6
PUT 08	8
PUT 10	10
PUT 12	12
PUT 16	16

PY

Union Y



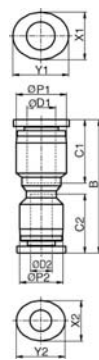
MODEL [ØD-T]

Tube (Metric) - Thread(R)

MODEL	ØD
PY 04	4
PY 06	6
PY 08	8
PY 10	10
PY 12	12

PG

Reducer



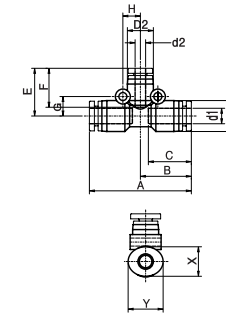
MODEL [ØD-T]

Tube (Metric) - Thread(R)

MODEL	ØD1	ØD2
PG 06-04	6	4
PG 08-04	8	4
PG 08-06	8	6
PG 10-06	10	6
PG 10-08	10	8
PG 12-08	12	8
PG 12-10	12	10
PG 16-12	16	12

PUG

Different Dia of Union Tee



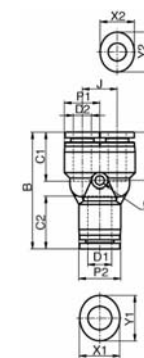
MODEL [ØD-T]

Tube (Metric) - Thread(R)

MODEL	ØD1	ØD2
PUG 06-04	6	4
PUG 08-04	8	4
PUG 08-06	8	6
PUG 10-06	10	6
PUG 10-08	10	8
PUG 12-08	12	8
PUG 12-10	12	10

PW

Reducer Y



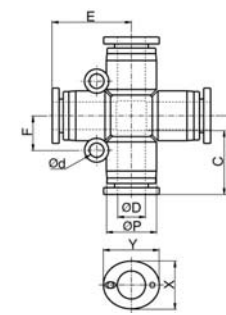
MODEL [ØD-T]

Tube (Metric) - Thread(R)

MODEL	ØD1	ØD2
PW 06-04	6	4
PW 08-04	8	4
PW 08-06	8	6
PW 10-06	10	6
PW 10-08	10	8
PW 12-08	12	8
PW 12-10	12	10

PZA

Union Cross



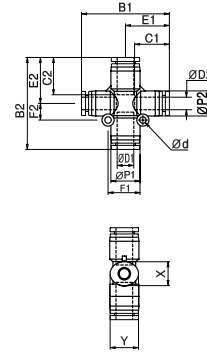
MODEL [ØD-T]

Tube (Metric) - Thread(R)

MODEL	ØD
PZA 04	4
PZA 06	6
PZA 08	8
PZA 10	10
PZA 12	12

PZA22

Different Dia of Union Cross(2/2)

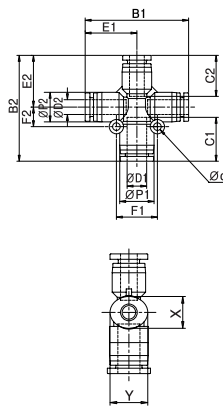


MODEL [ØD-T]

Tube (Metric) - Thread(R)		
MODEL	ØD1	ØD2
PZA22 08-06	8	6
PZA22 10-08	10	8
PZA22 12-10	12	10

PZA31

Different Dia of Union Cross(3/1)

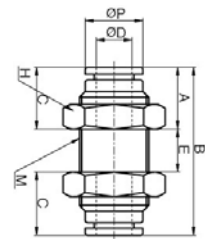


MODEL [ØD-T]

Tube (Metric) - Thread(R)		
MODEL	ØD1	ØD2
PZA31 08-06	8	6
PZA31 10-08	10	8
PZA31 12-10	12	10

PMM

Bulkhead Union

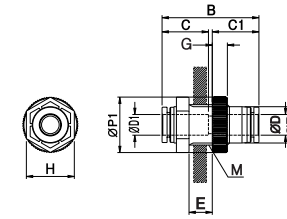


MODEL [ØD-T]

Tube (Metric) - Thread(R)	
MODEL	ØD
PMM 04	4
PMM 06	6
PMM 08	8
PMM 10	10
PMM 12	12

PPM

Bulkhead Union P

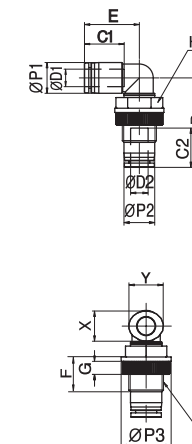


MODEL [ØD-T]

Tube (Metric) - Thread(R)	
MODEL	ØD
PPM 04	4
PPM 06	6
PPM 08	8
PPM 10	10
PPM 12	12

PLM

Bulkhead Union P

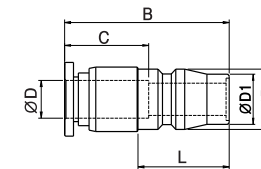


MODEL [ØD-T]

Tube (Metric) - Thread(R)	
MODEL	ØD
PLM 04	4
PLM 06	6
PLM 08	8
PLM 10	10
PLM 12	12

PCP

Straight Ace Coupler Plug



MODEL [ØD-T]

Tube (Metric) - Thread(R)	
MODEL	ØD
PCP 04	4
PCP 06	6
PCP 08	8
PCP 10	10
PCP 12	12
PCP 16	16